

# How to engage with brand-new chosen leaders

## How to engage with brand-new chosen leaders

New state and federal leaders will take workplace in January. Where they base on transport will have a considerable influence on the future of movement in America. Here's how you can engage with your brand-new chosen authorities to assist enhance our transport system in coming years.



*How can you deal with chosen authorities to assist lead the way for more jobs like this?*

The federal government hands specifies numerous countless dollars on a yearly basis, with couple of strings connected. Guvs, state lawmakers, and regional leaders have a lot of cash to provide the jobs, services, and results that citizens need.

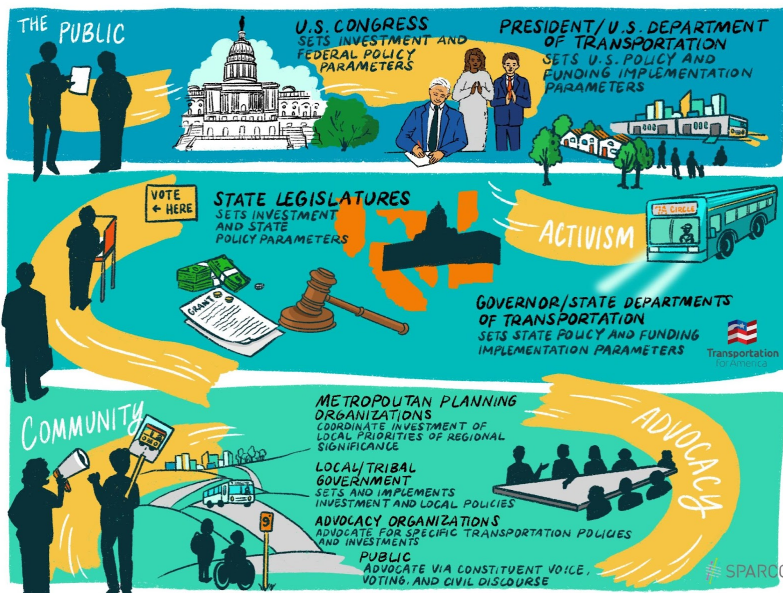
Yet the objectives of state transport programs are typically misaligned with citizen concerns. A current report from the National Cooperative Highway Research Program revealed that by one procedure, states utilize less than 4 percent of versatile federal dollars on transit, even though they might invest much more. Discover more on TransitCenter's blog site.

Too frequently, state leaders focus costs on just one outcome: removing blockage. This technique ignores citizen issues like equity, upkeep, security, and environment emissions– and by the time choice makers navigate to attending to those concerns, they've invested a good deal of cash and time on street growths. (And these costly brand-new lanes frequently fill with more traffic, thanks to a procedure called “caused need.” We discussed this pricey cycle in our report *The Congestion Con.*)

**We do not need to choose more of the very same.** With brand-new leaders headed into workplace, supporters have a chance to alter this old pattern and assistance develop a much better transport system for their neighborhood.

New guvs can guide the transport system in the best instructions by offering clear directions on the objectives of the state transport program so that the transport department can begin making development on those concerns. In addition, guvs can pick strong management in their own workplace, the state DOT, and in many cases, the transport commission that manages the DOT. The guv must pick leaders that comprehend the transport program and are encouraged to make required modifications.

Though frequently neglected, regional leaders, like mayors, may be the most essential stakeholders in transport decision-making. When promotes clever transport in neighborhoods are successful, it's typically due to support from regional leaders who lobby for the job on the state and federal level and bring other chosen authorities to the table.



Each level of federal government has various levers to make modification.

Finally, the federal government still has a crucial function to play. The licensed financing levels embedded in the facilities law aren't ensured, and we've currently seen federal policymakers underfund transit and defund specific active transport programs. The Biden administration likewise makes the last get in touch with competitive grant financing, figuring out which jobs will gain from essential financing programs like the Reconnecting Communities Program. By making these choices, the administration can assist guarantee federal dollars are advancing the President's objectives, consisting of improving equity in the transport system.

With vital choices occurring at all 3 levels of federal government, engaging with brand-new leaders can seem like a difficult job. **These 3 pieces of guidance can assist you optimize your impact to accomplish linked, healthy, fair neighborhoods.**

## Check in early and frequently

As their constituent, you have special power to inform chosen authorities on the difficulties and chances that affect the transport area. State and regional leaders will eventually figure out just how much financing will go to tasks and programs near you, consisting of security enhancements, transit, and highway growths. Engage with them early to establish an understanding of how and when transport financing will be utilized and let them understand what your concerns are. Participate in public remark and evaluation durations to motivate them to make the ideal get in touch with essential policy, financial investment, and application actions.

There are lots of methods you can connect to your chosen leaders, consisting of signing up with sign-on letters, engaging with their social networks, composing them a letter, calling them up, and even visiting their workplaces. If they begin to move the needle in the best instructions, do not forget to

applaud them.

## **Find the linchpins**

Government choice making takes place in stages. Chosen authorities set their concerns, recognize problems and methods to resolving them, develop a strategy (consisting of time, resources, and budget plan criteria), and look for input on their budget plan, policy, or application choices. When these actions of the procedure are total, they'll examine their development on their concerns and start the procedure once again.

When having actually discussions with chosen leaders, look for info about where they're at the same time and customize your asks to today minute. Learn when public hearings are arranged and attend them. Connect with your regional advocacy companies and follow their lead. Do not be scared to point out if crucial information were missed out on at an earlier phase of the procedure (as activist Michael Moritz did in Texas).

## **Look for commonalities**

Our transport requirements are regularly promoted as bipartisan issues, and for great factor. The success of our transport system has a direct effect on every constituent, affecting financial vigor, public health, environment emissions, and everybody's capability to access the products and services they require.

Often, chosen authorities get in workplace without a clear understanding of how the transport system can assist them reach their objectives. By making these connections clear, you can develop strong allies, even with leaders who at first disagree with you.

Transportation for America Chair John Robert Smith had simply that experience when he brought traveler rail to Meridian, MS— he discovered that Republican political leaders, opposed to traveler rail, wanted to support his job as soon as he described its financial advantages. To even more construct assistance, he humanized the concern by bringing choice makers deal with to face with constituents to describe how guest rail affects them.

## **The bottom line**

It's not unusual for federal, state, and regional chosen leaders to do not have a strong understanding of our facilities requires. Choice makers at all levels require to understand that the transport program can assist them provide on essential concerns for their constituents, regardless of their political association. By engaging with your brand-new leaders, you can assist them make development on environment, security, equity, gain access to, and repair work objectives.

Source: [How to engage with brand-new chosen leaders](#)